

MANAGE & MONITOR SCHEMA CHANGES

SQL change manager™

SOLUTIONS FOR CHANGE & CONFIGURATION MANAGEMENT

Idera SQL change manager is a powerful solution for simplifying and automating change management for Microsoft SQL Server databases. SQL change manager streamlines database change management procedures by capturing periodic database schema snapshots, highlighting changes from a baseline, and enabling easy roll-back, roll-out and recovery of lost or damaged database objects. Designed to meet the needs of enterprise-scale SQL Server implementations, SQL change manager easily scales to monitor and automate schema changes in environments of any size.

PRODUCT HIGHLIGHTS

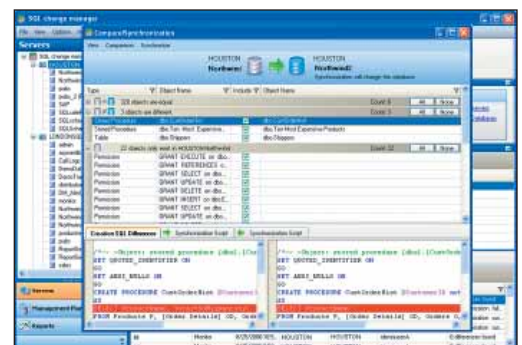
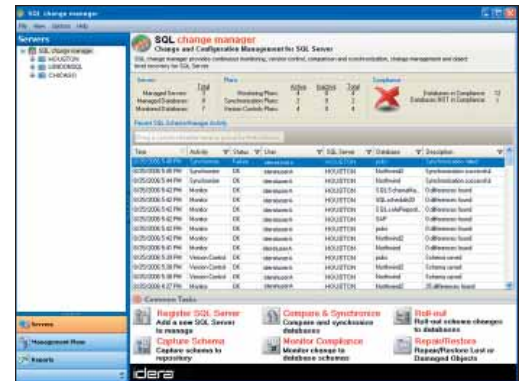
- Manage and track schema changes
- Roll out databases from development to production
- Implement changes across multiple production systems
- Compare & synchronize schemas—enterprise wide
- Roll-back schema changes
- Recover lost or damaged database objects
- Perform change monitoring and compliance reporting

SQL change manager's Central Management Console allows users to quickly and easily roll out changes to one or many databases from a central point of control, capture database schemas, monitor change for compliance, and recover lost or damaged objects.

Browse schema snapshots using the built-in browser. Quickly view schema snapshots, objects, creation scripts, and more saved in the SQL change manager repository.

"SQL change manager has helped us roll out a completely new and innovative application that will support our entire business. Using SQL change manager, we have been able to work with two separate development teams then quickly compare beta and development versions for changes."

- SENIOR DATABASE ADMINISTRATOR, SMALL BUSINESS INSURANCE COMPANY



WHY SQL change manager?

SQL Server databases have become a vital infrastructure component supporting mission-critical applications across the enterprise. As SQL Server implementations grow in size, it becomes more and more challenging for DBAs to manage change and implement effective version control. DBAs need to ensure that necessary changes are rolled out quickly and effectively, and that undesirable changes can be rapidly identified and rolled back. Traditional manual methods or simple database schema synchronization solutions can't scale to meet the needs of DBAs managing hundreds or thousands of databases. SQL change manager provides a comprehensive, automated solution for capturing, monitoring and managing database change. Designed in partnership with SQL Server DBAs from Fortune 1000 companies, SQL change manager minimizes the risk of outage due to incorrect or inappropriate change and streamlines schema change roll-out procedures.

DOWNLOAD A FREE EVALUATION TODAY AT WWW.IDERA.COM

SQL change manager

MANAGE & MONITOR SCHEMA CHANGES

KEY BENEFITS

Effective Database Change Management and Version Control: With SQL change manager you can implement a Management Plan to automatically capture snapshots of database schemas on a regular basis, or take snapshots on an ad-hoc basis as needed. Database snapshots are stored in an efficient, compact format and can be kept for long periods of time in the SQL change manager repository. Using this comprehensive version history, you can:

- Report on databases that are inconsistent with a standard, baseline schema
- Highlight what specific changes have been made to a schema between any two snapshots
- Roll back to any previous version of a database schema

Simplified Roll-out of Database Changes: With SQL change manager you can automate implementing even complex changes in your SQL Server databases. SQL change manager lets you automatically:

- Roll out schema changes to existing databases
- Replace objects in one database with objects from another database
- Add objects to one or multiple databases
- Create multiple new databases based on a standard schema

Rapid Recovery of Lost or Damaged Database Objects: Even the best thought out change can have unintended consequences. When erroneous schema changes must be undone, DBAs need to have the ability to quickly revert to a previous schema version, or repair specific database objects. With SQL change manager, DBAs can:

- Roll back a database schema to a previous version using a schema snapshot or another database as a source
- Restore lost or damaged objects from a snapshot or another database

TECHNICAL FEATURES

- **Powerful Comparison & Synchronization Engine:** provides the ability to compare and synchronize a database to another live database or a historical snapshot. This enables rapid roll-back, roll-forward and roll-out of schemas and database objects. The synchronization engine also enables complete customization of the synchronization process including:
 - granular control of objects to be compared
 - ability to exclude objects based on naming conventions
 - ability to view and edit synchronization scripts
 - ability to execute pre- and post-synchronization scripts
- **Innovative Change Management Automation Engine:** provides the ability to define Management Plans. Management Plans run on a regularly scheduled basis to capture and store database schema snapshots which can then be used for version control, change monitoring and object recovery.
- **Comprehensive Database Version History:** the version history stored in the SQL change manager repository provides a complete history of the database over time, providing the ability to browse historical snapshots and discover what the database looked like, hours, days, months or even years ago. This also provides a valuable audit trail for forensic analysis.
- **Object Recovery and Repair:** provides the ability to recover lost or damaged database objects (e.g. a deleted or wrongly updated stored procedure) from previous versions stored in the SQL change manager central repository.
- **Fast, Safe, Database Migration:** SQL change manager's Roll-Out task enables fast and safe bulk migration of SQL Server 2000 schemas to SQL Server 2005.
- **Enterprise-scale Architecture:** No objects are installed on the monitored SQL Servers, thereby providing low- overhead capture of database schema information via a central collection service and change management repository. In addition, SQL change manager's central console provides an easy-to-use single point of control for managing change across the enterprise.
- **Powerful Reporting:** provides a set of built-in standard reports for change management and compliance, plus the ability to produce custom reports from data stored in the SQL change manager repository, and the ability to export data to Excel.
- **Task Wizards:** provides step-by-step guidance through the most common change management activities including: Server Registration, Database Schema Capture, Comparison & Synchronization, Database Roll-out, Change & Compliance Monitoring and Object Recovery.
- **Command-line Interface:** provides the ability to execute SQL change manager operations from within scripts and SQL Server jobs.

SYSTEM REQUIREMENTS

MANAGEMENT CONSOLE

- Windows 2000 SP3+, Windows XP SP2, Windows Server 2003 SP1
- Microsoft .NET 2.0

DATA REPOSITORY

- SQL Server 2000 or 2005

SUPPORTED SQL SERVER ENVIRONMENTS

- SQL Server 2000 Standard Edition, SQL Server 2000 Enterprise Edition, SQL Server 2005 Standard Edition, SQL Server 2005 Enterprise Edition

SQL change manager does not require the installation of any components, DLLs, scripts, stored procedures, or tables on the monitored SQL Server instances.

Idera | BBS Technologies

802 Lovett Blvd Houston, Texas 77006

PHONE 713.523.4433 | TOLL FREE 877.GO.IDERA (464.3372)

FAX 713.862.5210 | WEB www.idera.com

idera[™]
TOOLS FOR SQL SERVER[™]

DOWNLOAD A FREE EVALUATION TODAY AT WWW.IDERA.COM